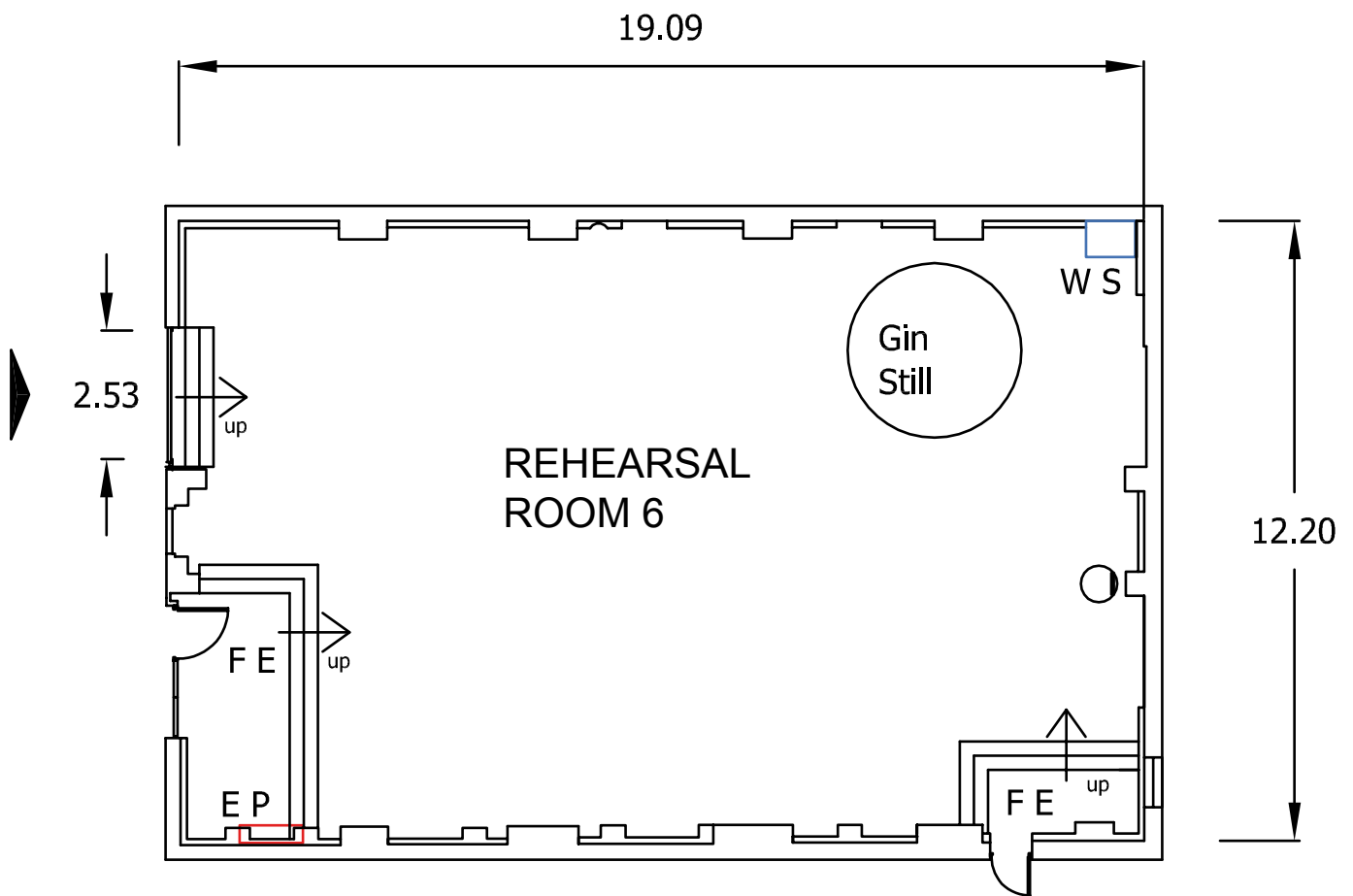




# MILLS STUDIOS



## Rehearsal Room 6 The Gin Still



### KEY

	MAIN ENTRANCE
<b>FE</b>	FIRE EXIT
<b>EP</b>	ELECTRIC PANEL
<b>WS</b>	WATER SUPPLY OR SINK
<b>H</b>	HEATER

### REHEARSAL ROOM DIMENSIONS

REHEARSAL ROOM 6	LENGTH	WIDTH	HEIGHT	AREA
Feet/inches	62'7"	40'0"	30'7"	2,507 sq ft
Metres	19.09m	12.20m	9.35m	232.90 sq m

Dimensions are not to be scaled from this drawing. Production must verify all dimensions before commencing any works on this stage.

# Rehearsal Room 6

## Technical details

REHEARSAL ROOM SIZE	Length	62'7" ft	19.09 m
	Width	40'0" ft	12.20 m
	Height (to runway beams)	30'7" ft	9.35 m
	Area	2,507 sq ft	232.90 sq m
ELECTRICAL SUPPLY	Maximum electrical load	AC full load Amps 3 phase C - from outlets	
	Number of 32 Amp sockets	1	
	Number of 13 Amp sockets	14	
BEAM LOADING	Maximum centre point loading	300kgs	
	Maximum UDL loading	1330kgs	
	Number of roof beams	N/A	
	<i>*maximum total distributed load across the length of steel pair of channels</i>		
WALL ANCHOR POINTS	1800kgs (SWL)		
LOADING ACCESS	Double doors via Loading Bay		
FLOOR TYPE	Wooden, raised floor		
FLOOR LOADING	Limited to 175kgs/m <sup>2</sup>		
HEATING	Heated air blower	Yes	
WATER SUPPLY	Yes		
TELECOMS	Available	Yes	
	Number of comms. outlets	2	
	Broadband connectivity available	No	
FIRE PROTECTION	Sprinkler activation temperature	N/A	
	Smoke detectors	No	
FIRE EXTINGUISHERS	H2O	1	
	CO2	2	
	Foam	1	
RED LIGHT AND BELL	No		
EXTRACTION	No		

