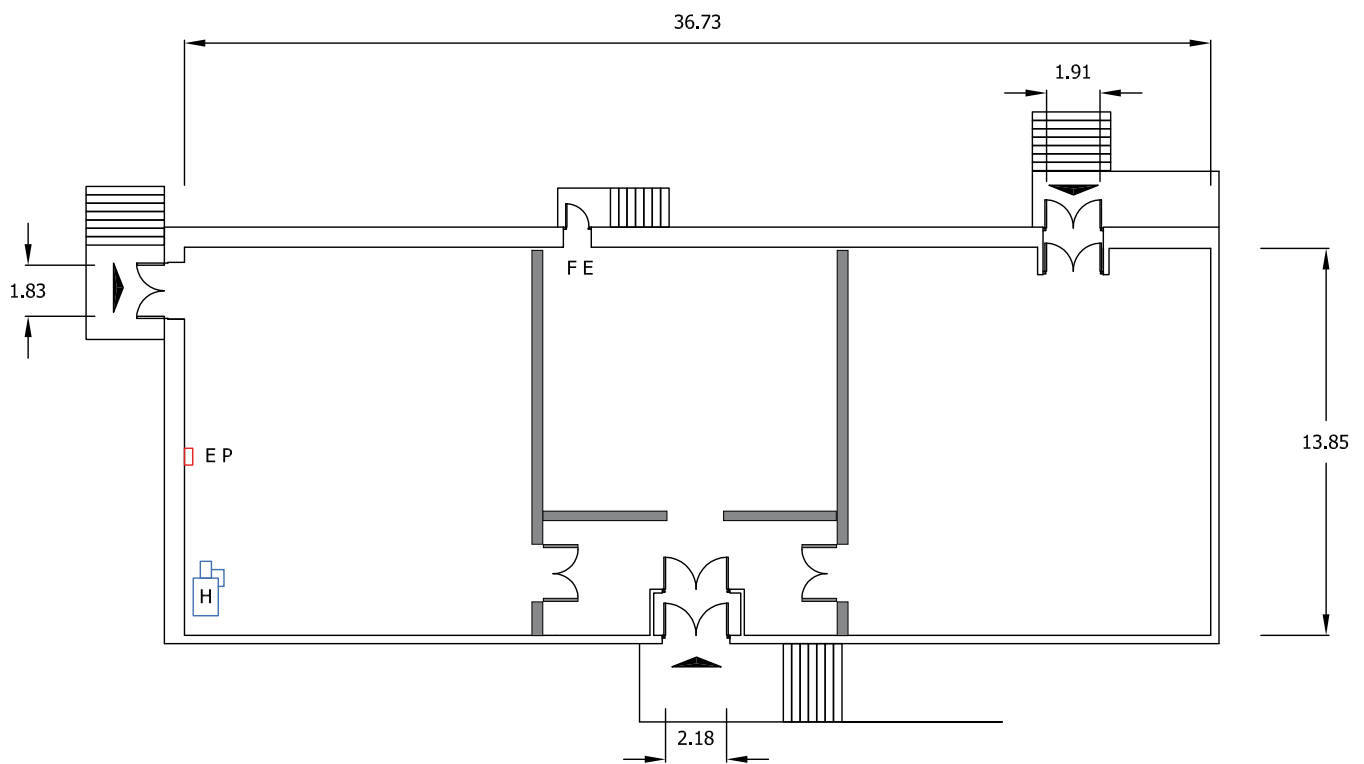


## Rehearsal Room A



### KEY

	MAIN ENTRANCE
<b>FE</b>	FIRE EXIT
<b>EP</b>	ELECTRIC PANEL
<b>WS</b>	WATER SUPPLY OR SINK
<b>H</b>	HEATER

### REHEARSAL ROOM DIMENSIONS

REHEARSAL ROOM A	LENGTH	WIDTH	HEIGHT	AREA
Feet/inches	43'3"	45'7"	21'11"	1,970 sq ft
Metres	13.20m	13.85m	6.70m	183 sq m

Dimensions are not to be scaled from this drawing. Production must verify all dimensions before commencing any works on this stage.

# Rehearsal Room A

## Technical details

REHEARSAL ROOM SIZE	Length	43' 3"	13.20 m
	Width	45' 7"	13.85 m
	Height (to runway beams)	21' 11"	6.70 m
	Area	1,970 sq ft	183 sq m
ELECTRICAL SUPPLY	Maximum electrical load	AC full load Amps 400 3-phase Connection via sequential NRG Powerlock	
	Number of 63 Amp sockets	N/A	
	Number of 13 Amp sockets	4 double	
BEAM LOADING	None permitted		
WALL ANCHOR POINTS	N/A		
LOADING ACCESS	External dock doors: 2m wide Rehearsal Room doors: Double Doors via Lobby		
FLOOR TYPE	Harlequin Activity floor with Standfast vinyl top surface		
FLOOR LOADING	None permitted		
HEATING	Heated air blower		
WATER SUPPLY	No		
TELECOMS	No		
FIRE PROTECTION	Sprinkler activation temperature	141C	
	Smoke detectors	No	
FIRE EXTINGUISHERS	H2O	0	
	CO2	0	
	Foam	1	
RED LIGHT AND BELL	No		
EXTRACTION	No		

